

# PlanToConnect

Mainstreaming ecological connectivity in spatial planning  
systems of the Alpine Space

AlpPlan WS – Vienna  
08/11/2022

---

# A - Project identification

## A.1 Project identification

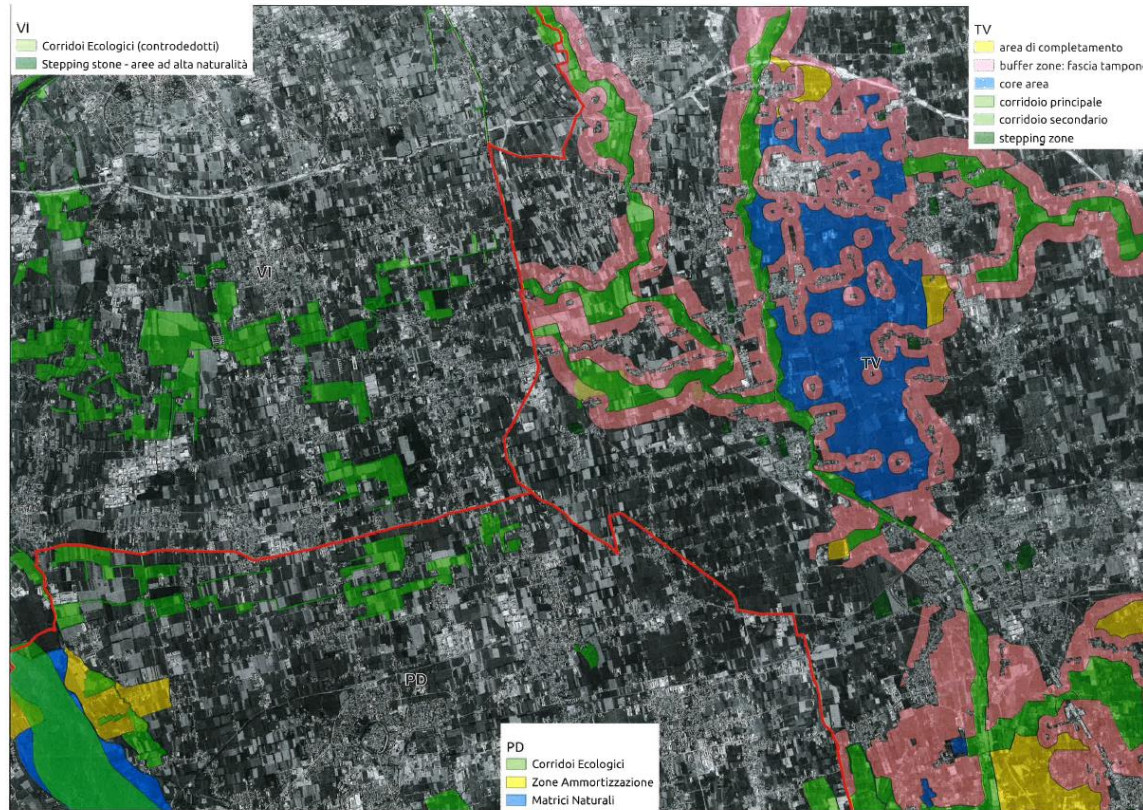
Project id (automatically created)	ASP0100083
Name of the lead partner organisation	Urbanistični inštitut Republike Slovenije
Name of the lead partner organisation in English	Urban Planning Institute of the Republic of Slovenia
Project title	Mainstreaming ecological connectivity in spatial planning systems of the Alpine Space
Project acronym	PlanToConnect
Project priority	Climate resilient and green Alpine region
Project priority	SO 1.2: Enhancing protection and preservation of nature, <u>biodiversity and green infrastructure</u> , including in urban areas, and reducing all forms of pollution
Project duration in months	36

## B - Project partners

### Partners overview

Number	Status	Name of the Organization in English	Country	Organisation abbreviation	Partner role
1	Active	Urban Planning Institute of the Republic of Slovenia	Slovenija (SI)	UIRS	LP
2	Active	Veneto Region	Italia (IT)	RV	PP
3	Active	ALPARC – the Network of Alpine Protected Areas	France (FR)	ALPARC	PP
4	Active	Asters, organisation for the conservation of natural areas in Upper Savoy	France (FR)	ASTERS-CEN74	PP
5	Active	Eurac Research	Italia (IT)	EURAC	PP
6	Active	Ifuplan - Institute for Environmental Planning and Spatial Development	Deutschland (DE)	ifuplan	PP
7	Active	University of Würzburg	Deutschland (DE)	JMU	PP
8	Active	Salzburg Institute for Regional Planning and Housing	Österreich (AT)	SIR	PP
9	Active	E.C.O. Institute of Ecology Ltd.	Österreich (AT)	ECO	PP
10	Active	Municipality of Sondrio	Italia (IT)	SO	PP

## Current situation in spatial planning in Veneto: uneven ecological networks



No reference to a common alpine connectivity scenario and shared priorities in national/regional/local ecological networks plans

Use of different methodologies and approaches for ecological network design across administrative borders

Poor consideration of biodiversity/connectivity issues in strategic and regulative planning as well as in SEA and EIA

lack of consistency in the planning of ecological corridors across administrative and national borders

No managing or monitoring of connectivity

## General Objective

To support the creation of a coherent **alpine-wide network of green and blue infrastructures** (GBI) for ecological connectivity (EC) based on **harmonized regional networks** under a **common alpine planning strategy for EC**.

To improve the capacity of planners and planning systems to effectively address connectivity gaps, barriers and major threats in strategic alpine connectivity areas by **operationalizing biodiversity and connectivity concepts into spatial planning and territorial policies**.



# ALPBIONET 2030, OpenSpaceAlps, AlpES and DinAlpCONNECT

OpenSpaceAlps capacity building seminar 22 - 25/07/2021

Overarching connectivity scenario, SACA, common concepts, planning criteria and cooperation structures that are available to harmonize and upgrade planning systems thus bringing connectivity to the ground

## Project Outputs

The project develops a **comprehensive package** for planners and practitioners in charge of the planning, design and implementation of the ecological networks in the Alpine Space including:

1. **Alpine planning strategy for ecological connectivity** and harmonization of national/regional ecological network planning
2. **Guidelines on integrated planning of GBI connectivity networks**. Planning tools and governance settings to establish and manage connectivity across administrative boundaries and cross-border areas
3. **Case studies of integrated planning of GBI connectivity networks** in pilot sites across administrative boundaries and cross-border areas
4. **Training and capacity building system** on Integrated Spatial planning of GBI networks for ecological connectivity

## Work Packages

### WP1 - knowledge base for green and blue infrastructure (GBI) connectivity planning

EURAC leads the PPs in the definition of an **Alpine planning strategy for ecological connectivity** (priority planning areas, current and emerging threats, potentials, protocol to identify assess GBI elements at different planning levels, procedural steps on adopting GBI priorities, knowledge and information into planning systems)

### WP2 - Implementing GBI networks for connectivity (case studies)

The spatial planning department of Veneto Region leads PPs in conducting **8 case studies of GBI network implementation in priority connectivity areas** and the definition of **guidelines on integrated planning of GBI networks for connectivity**

### WP3 – Capacity building, training and knowledge transfer

**A comprehensive capacity building and training package** is created to guide planning authorities at regional/local level in the design of GBI networks for connectivity. **Sub group of AlpPlan network** ensures **long-term dissemination** to stakeholders in the entire Alpine Space. **Mid-term transnational workshop** and strategic transnational WS with EUSALP and Alpine convention to get a creative push for the ongoing work and the finalization of the Alpine Strategy.



# WP1 - knowledge base for green and blue infrastructure (GBI) connectivity planning

EURAC leads the PPs in the definition of an Alpine planning strategy for ecological connectivity including:

- The definition of **common alpine priority connectivity areas for spatial planning** (connectivity “hotspots”)
  - **Analysis of main GBI typologies to be preserved/reinforced**, gaps and barriers in priority areas
  - **Compatible, conflicting and synergic anthropogenic uses** in priority areas
  - **Emerging threats** to GBI connectivity function from future major developments and **in particular from RES developments;**
- **The use of potential drivers for landscape-level conservation and connectivity in EU** outside core protected areas such as “Other Effective area-based Conservation Measures’ (OECMs) and regulation on nature restoration (*COM(2022) 304 final*)
  - **An agreed protocol for all alpine countries to assess and analyse GBI connectivity networks** and their elements at the different planning levels
  - A guide on **procedural steps on how to adopt GBI network priorities, knowledge and information into planning systems**

## WP2 - Implementing green and blue infrastructure (GBI) networks for connectivity

Spatial planning department of Veneto Region leads **PPs in conducting a case studies of GBI network implementation** in pilot sites of priority connectivity areas and develop **guidelines on integrated planning of GBI networks for connectivity.**

**Survey of current practices in planning and implementation of GBI connectivity networks** in the AS and PP regions: good practices, challenges and opportunities

Outline of 8 technical proposal for the spatial planning authorities in pilot sites.

- **GBI connectivity network plan:** identification of GBI elements, barriers/threats and corridor design;
- **Integration of the plan into existing planning tools** (e.g. urban and zoning plans),
- **Provisions for impact assessment** (EIA/SEA) of major developments including RES;
- **Provisions for sector plans** (e.g. urban green plans, climate adaptation plans)
- **Identification of adequate governance settings** for corridor implementation, maintenance and monitoring of connectivity (e.g. ecological contracts, river contracts, tenure agreements, payments for ES etc.).

## WP3 – Capacity building, training and knowledge transfer

JMU guide partners in the development of a **comprehensive capacity building and training system** on integrated Spatial planning of GBI networks for ecological connectivity. It includes:

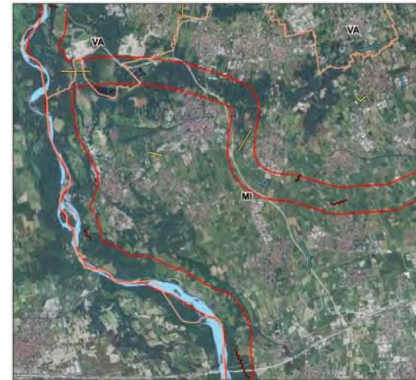
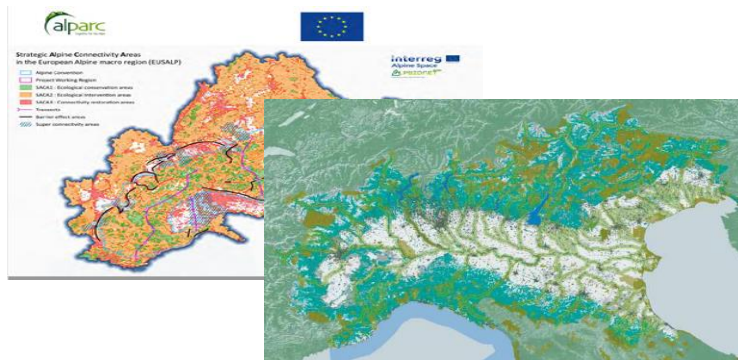
- **Establishing of Regional Connectivity Working Groups** to involve actively target groups (Project staff + contracted experts + stakeholders) on WP2 case studies.
- **To develop hands-on training modules** on planning and implementation of GBI in priority connectivity areas
- **To deliver training and workshop to experts**, planners and target groups involved through RCWGs in the integrated planning exercises in pilot areas (e-modules, technical toolkit). Modules make use of all project results. Content is coordinated with curricula of selected spatial planning degree programs by JMU;
- **Informing about the project, dissemination of findings and products**

## WP3 – Capacity building, training and knowledge transfer

### Transnational Working Group on Ecological Connectivity (TWGEC)

- **Set up of a transnational expert working group on ecological connectivity** within the AlpPlan network.
- **Includes all project partners and their experts** and is open to new members
- **Supports the realization of the Alpine planning strategy** for ecological connectivity
- **Discuss provide inputs and validate project outputs**
- **Capacity building of RCWGs** experts and planners (e-modules and delivery of hands-on training)
- Organizes **transnational meetings and events** for coordination with key actors and multipliers
- **Lead the organization of 2 days mid-term transnational event with thematic workshops** observers and other EU projects to get a creative push for the ongoing project work and finalization of the Alpine Planning Strategy.
- **Organizes min 1 transnational strategic workshop** dedicated to EUSAP AGs 6, 7 and 9, and Alpine Convention WG

# PlanToConnect - Contacts



Sergeja Praper  
Urban Planning institute of the Republic of Slovenia (Lead Partner)  
[sergeja.praper@uirs.si](mailto:sergeja.praper@uirs.si)

Claudio Chiapparini  
Spatial Planning Department (WPL2)  
Veneto Region  
[claudio.chiapparini@regione.veneto.it](mailto:claudio.chiapparini@regione.veneto.it)

TWGEC of the AlpPlan Network  
[alpplan@arl-net.de](mailto:alpplan@arl-net.de)