
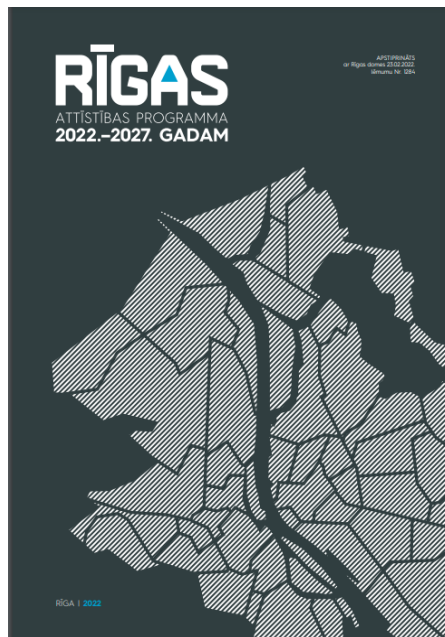


Fact sheet for planning levels

Planning level	Type of plan																															
<p>Local</p>  <table border="1"> <thead> <tr> <th>Planning level</th> <th>Planning instrument</th> <th>Scale</th> </tr> </thead> <tbody> <tr> <td rowspan="4">NATIONAL (STATE)</td> <td>The Model for Growth of Latvia: Human Being in the First Place</td> <td>Nationwide</td> </tr> <tr> <td>Sustainable Development Strategy of Latvia</td> <td>Nationwide</td> </tr> <tr> <td>National Development Plan</td> <td>Nationwide</td> </tr> <tr> <td>Maritime Spatial Plan</td> <td>The sea and the terrestrial part that is functionally interlinked with the sea</td> </tr> <tr> <td rowspan="3">REGIONAL (PLANNING REGIONS)</td> <td>Sustainable Development Strategy of a Planning Region</td> <td>Territory of the Planning Region</td> </tr> <tr> <td>Planning Region Development Programme</td> <td>Territory of the Planning Region</td> </tr> <tr> <td>Sustainable Development Strategy of a Local Government</td> <td>Territory of the local government</td> </tr> <tr> <td rowspan="4">LOCAL (LOCAL GOVERNMENTS)</td> <td>Local Government Development Programme</td> <td>Territory of the local government</td> </tr> <tr> <td>Local Government Spatial Plan</td> <td>Territory of the local government</td> </tr> <tr> <td>Local Plan</td> <td>A part of the territory of the local government</td> </tr> <tr> <td>Detailed Plan</td> <td>Typically deals with land unit(s)</td> </tr> <tr> <td>ALL</td> <td>Thematic Plans</td> <td>Any</td> </tr> </tbody> </table>	Planning level	Planning instrument	Scale	NATIONAL (STATE)	The Model for Growth of Latvia: Human Being in the First Place	Nationwide	Sustainable Development Strategy of Latvia	Nationwide	National Development Plan	Nationwide	Maritime Spatial Plan	The sea and the terrestrial part that is functionally interlinked with the sea	REGIONAL (PLANNING REGIONS)	Sustainable Development Strategy of a Planning Region	Territory of the Planning Region	Planning Region Development Programme	Territory of the Planning Region	Sustainable Development Strategy of a Local Government	Territory of the local government	LOCAL (LOCAL GOVERNMENTS)	Local Government Development Programme	Territory of the local government	Local Government Spatial Plan	Territory of the local government	Local Plan	A part of the territory of the local government	Detailed Plan	Typically deals with land unit(s)	ALL	Thematic Plans	Any	<p>Riga Development Programme 2022-2027</p> 
Planning level	Planning instrument	Scale																														
NATIONAL (STATE)	The Model for Growth of Latvia: Human Being in the First Place	Nationwide																														
	Sustainable Development Strategy of Latvia	Nationwide																														
	National Development Plan	Nationwide																														
	Maritime Spatial Plan	The sea and the terrestrial part that is functionally interlinked with the sea																														
REGIONAL (PLANNING REGIONS)	Sustainable Development Strategy of a Planning Region	Territory of the Planning Region																														
	Planning Region Development Programme	Territory of the Planning Region																														
	Sustainable Development Strategy of a Local Government	Territory of the local government																														
LOCAL (LOCAL GOVERNMENTS)	Local Government Development Programme	Territory of the local government																														
	Local Government Spatial Plan	Territory of the local government																														
	Local Plan	A part of the territory of the local government																														
	Detailed Plan	Typically deals with land unit(s)																														
ALL	Thematic Plans	Any																														

Facts

Legal basis

- Spatial Development Planning Law (adopted by the *Saeima* on 13 October 2011; entered into force on 1 December 2011). Section 22 outlines the contents of a Development Programme and the basis for its preparation.
- Cabinet Regulations No. 628 (adopted by the Cabinet of Ministers on 14 October 2014; entered into force on 1 May 2015) on local (municipal) spatial development planning documents details the contents of a Development Programme (Section 2.2) and the procedure for its preparation, implementation, and monitoring (Section 3.1).

Competences

- Local governments are responsible for the preparation and approval of the Development Programme.
- In many cases, the preparation of a Development Programme is subcontracted to a planning consultancy company, with the local government retaining a supervisory and consultative role.

Binding force

- A local government Development Programme is approved by the local government council.
- The implementation of the Development Programme is the joint responsibility of all municipal administrative units, institutions, and enterprises.

Tasks and content

- A Development Programme is a medium-term development planning document that defines priority issues that need to be addressed by the local government. The Development Programme is meant to provide coordination for the work of local government institutions in achieving the goals set out in the Sustainable Development Strategy.
- A local government Development Programme includes an analysis of the current situation, trends, forecasts, and information regarding the process for preparing the Development Programme. It defines medium-term

--

priorities, outlines the action and investment plan, the resources necessary for implementing the Development Programme, and the procedures for its monitoring.

Process, duration, participation

- The decision to prepare a new Development Programme for Riga city was made in November 2018.
- The preparatory work started with analysing the current situation, including assessing the results of the previous Development Programme, outsourcing research on demographic trends in Riga, meetings with various municipal institutions, and other activities.
- The preparation of the Development Programme took place in two phases: (1) preparation of the strategic part (November 2019 until December 2020) and (2) preparation of the action and investment plans (December 2020 until July 2021). In both phases, thematic groups (nine in total) played an important role in identifying and detailing the specific development priorities.
- The draft version of the RDP2027 was ready in August 2021. It was put out for public consultation in September & October 2021.
- Based on the outcomes of the public consultation process, the draft document was improved and forwarded to the Riga City Council for approval.
- The RDP2027 was approved by the Riga City Council on 23 February 2022.
- The public engagement activities included citizen surveys, a public discussion of the draft document, webinars about the strategic part of the programme, a youth forum, and other events. Representatives of civil society were also involved in the different thematic groups.

Duration of validity

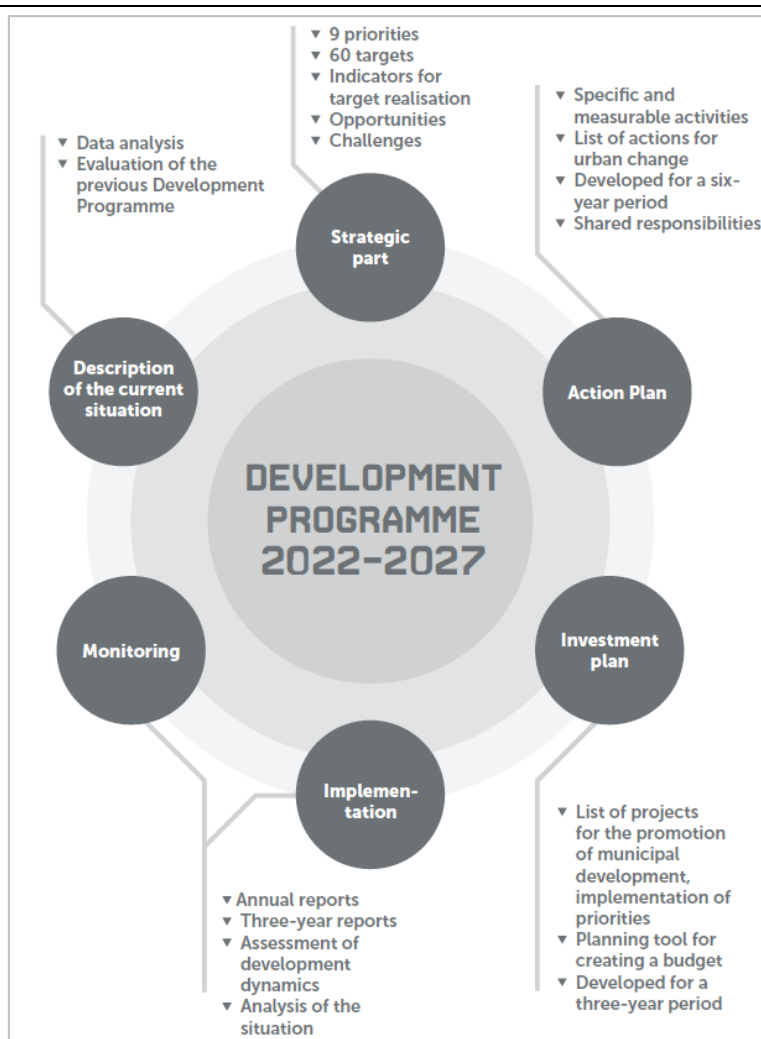
- A Development Programme is a medium-term (up to seven years) development planning document. The RDP2027 is valid for six years.

Details of the plan

The RDP2027 is a set of linked documents incorporating a description of the current status quo, the strategic part, the action plan, the investment plan, and the procedure for its implementation and monitoring (see figure).

The strategic part defines priority issues that need to be addressed in the city of Riga to achieve the four goals set out in the Riga Sustainable Development Strategy by 2030: (1) A skilled, secure, and active society; (2) an innovative, open, and exportable economy; (3) a comfortable, safe, and pleasant urban environment for citizens; and (4) Riga – an internationally recognised, significant, and competitive metropolis in Northern Europe. The RDP2027 identifies nine priorities or key development directions that need to be addressed more intensively within the next six years:

1. Convenient, environmentally-friendly mobility
2. An urban environment that promotes quality of life
3. Good environmental quality and a resilient urban ecosystem to mitigate climate change
4. Accessible, high-quality education
5. Availability of diverse, high-quality housing
6. Modern, open city management
7. A healthy, socially inclusive, and supportive city
8. A competitive city with an innovative economy
9. A diverse, authentic cultural environment



Each priority has a goal, targets, and indicators, which form a strategic part of the RDP2027. The Development Programme also has six horizontal themes, which are reflected in several priorities. They play a particular role in the implementation of the strategy's development objectives: (1) urban competitiveness, (2) climate change mitigation and adaptation, (3) involvement and empowerment of local communities, (4) cooperation and development of the Riga Metropolitan Area, (5) an inclusive society, and (6) digitalisation.

The action plan and investment plan serve as tools to carry out the targets in each priority. The action plan outlines specific and measurable activities, the envisaged results, the timeframe and spatial scale for implementation, and responsible institution(s). The investment plan lists specific projects related to the proposed actions, the envisaged results, the timeframe and spatial scale for implementation, responsible institution(s), and indicative budget. The investment plan is valid for three years.

Finally, the implementation and monitoring procedure describes the elements and process of the monitoring system, the main actors responsible for its implementation, and suggestions for better alignment of the RDP2027 with the municipal budget.

Characteristics

Location of the area

- The Development Programme deals with the whole area of the urban or rural municipality. In the case of Riga, the strategic part defines the overall strategic framework for the city. However, specific actions and projects can be implemented within the Riga metropolitan area, Riga city, or specific area(s).

Initial situation

- The RDP2027 was developed according to the Riga Sustainable Development Strategy with a time horizon to 2030, evaluating spatial development planning documents at the global, European, national, and regional level and spatial development planning documents of adjacent local governments.
- The preparation of the RDP2027 included an extensive analysis of the existing situation according to the four long-term development goals and 19 directions for action defined in the previous Development Programme. The analysis uses various metrics and statistical data to describe existing development tendencies.

Particularities of the procedure and/or contents

- Riga city is typically a frontrunner in implementing comprehensive urban planning and public engagement processes in Latvia for the preparation of the main municipal planning documents. Therefore, the preparation of the RDP2027 involved a series of public engagement and stakeholder involvement activities.
- The preparation of the RDP2027 required a strategic environmental impact assessment.

Notes and links

Informative booklet about the Riga Development Programme 2022-2027 (in English):

https://www.rdpad.lv/wp-content/uploads/2022/07/220715_Informativais_materials_ENG.pdf

Information about the Development Programme on the website of the Riga City Council City Development Department (in Latvian): <https://www.rdpad.lv/strategija/attistibas-programma-2022-2027/>