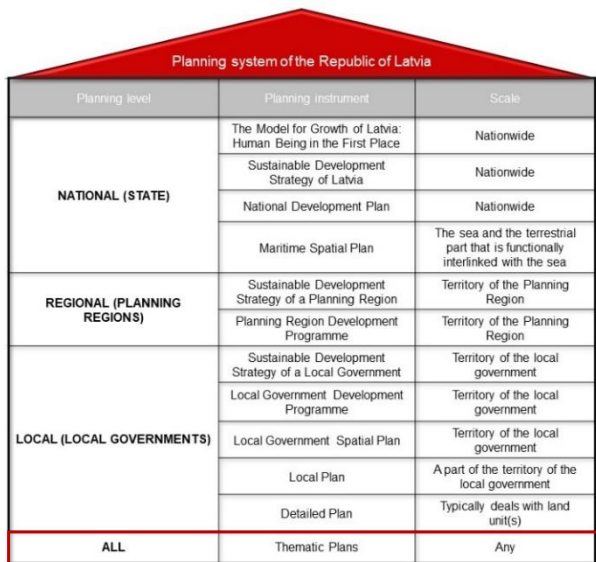
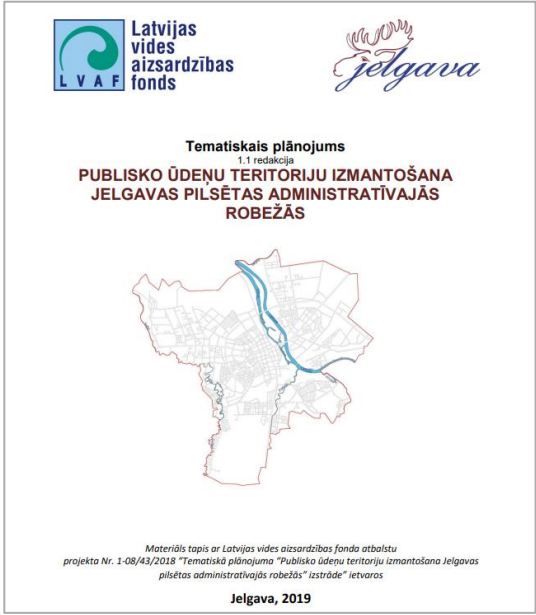


## Fact sheet for planning levels

| Planning level  | Type of plan   |  |       |                  |  |            |  |            |                           |            |                             |                       |  |   |                                  |                           |                                       |                                  |  |                                   |  |                                   |                               |                                   |            |   |     |               |                                   |  |                |     |  |
|---|--|--|-------|------------------|--|------------|--|------------|---------------------------|------------|-----------------------------|-----------------------|--|---|----------------------------------|---------------------------|---------------------------------------|----------------------------------|--|-----------------------------------|--|-----------------------------------|-------------------------------|-----------------------------------|------------|---|-----|---------------|-----------------------------------|--|----------------|-----|--|
| <p><b>Local</b></p>  <table border="1"> <thead> <tr> <th>Planning level</th> <th>Planning instrument</th> <th>Scale</th> </tr> </thead> <tbody> <tr> <td rowspan="3">NATIONAL (STATE)</td> <td>The Model for Growth of Latvia: Human Being in the First Place</td> <td>Nationwide</td> </tr> <tr> <td>Sustainable Development Strategy of Latvia</td> <td>Nationwide</td> </tr> <tr> <td>National Development Plan</td> <td>Nationwide</td> </tr> <tr> <td rowspan="2">REGIONAL (PLANNING REGIONS)</td> <td>Maritime Spatial Plan</td> <td>The sea and the terrestrial part that is functionally interlinked with the sea</td> </tr> <tr> <td>Sustainable Development Strategy of a Planning Region</td> <td>Territory of the Planning Region</td> </tr> <tr> <td rowspan="5">LOCAL (LOCAL GOVERNMENTS)</td> <td>Planning Region Development Programme</td> <td>Territory of the Planning Region</td> </tr> <tr> <td>Sustainable Development Strategy of a Local Government</td> <td>Territory of the local government</td> </tr> <tr> <td>Local Government Development Programme</td> <td>Territory of the local government</td> </tr> <tr> <td>Local Government Spatial Plan</td> <td>Territory of the local government</td> </tr> <tr> <td>Local Plan</td> <td>A part of the territory of the local government</td> </tr> <tr> <td>ALL</td> <td>Detailed Plan</td> <td>Typically deals with land unit(s)</td> </tr> <tr> <td></td> <td>Thematic Plans</td> <td>Any</td> </tr> </tbody> </table> | Planning level   | Planning instrument  | Scale | NATIONAL (STATE) | The Model for Growth of Latvia: Human Being in the First Place | Nationwide | Sustainable Development Strategy of Latvia | Nationwide | National Development Plan | Nationwide | REGIONAL (PLANNING REGIONS) | Maritime Spatial Plan | The sea and the terrestrial part that is functionally interlinked with the sea | Sustainable Development Strategy of a Planning Region | Territory of the Planning Region | LOCAL (LOCAL GOVERNMENTS) | Planning Region Development Programme | Territory of the Planning Region | Sustainable Development Strategy of a Local Government | Territory of the local government | Local Government Development Programme | Territory of the local government | Local Government Spatial Plan | Territory of the local government | Local Plan | A part of the territory of the local government | ALL | Detailed Plan | Typically deals with land unit(s) |  | Thematic Plans | Any | <p><b>Thematic Plan on the Use of Public Waters within the Administrative Borders of the City of Jelgava</b></p>  <p>Latvijas vides aizsardzības fonds</p> <p>Latvijas vides aizsardzības fonds</p> <p>Tematiskais plānojums<br/>1.1 redakcija<br/>PUBLISKO ŪDEŅU TERITORIJU IZMANTOŠANA<br/>JELGAVAS PILSĒTAS ADMINISTRATĪVAJĀS<br/>ROBEŽĀS</p> <p>Materiāls tapis ar Latvijas vides aizsardzības fonda atbalstu<br/>projekta Nr. 1-08/43/2018 "Tematiskā plānojuma "Publisko ūdeņu teritoriju izmantošana Jelgavas pilsētas administratīvajās robežās" izstrāde" ietvaros.</p> <p>Jelgava, 2019</p> |
| Planning level  | Planning instrument  | Scale  |       |                  |  |            |  |            |                           |            |                             |                       |  |   |                                  |                           |                                       |                                  |  |                                   |  |                                   |                               |                                   |            |   |     |               |                                   |  |                |     |  |
| NATIONAL (STATE)  | The Model for Growth of Latvia: Human Being in the First Place | Nationwide   |       |                  |  |            |  |            |                           |            |                             |                       |  |   |                                  |                           |                                       |                                  |  |                                   |  |                                   |                               |                                   |            |   |     |               |                                   |  |                |     |  |
|   | Sustainable Development Strategy of Latvia                     | Nationwide   |       |                  |  |            |  |            |                           |            |                             |                       |  |   |                                  |                           |                                       |                                  |  |                                   |  |                                   |                               |                                   |            |   |     |               |                                   |  |                |     |  |
|   | National Development Plan                                      | Nationwide   |       |                  |  |            |  |            |                           |            |                             |                       |  |   |                                  |                           |                                       |                                  |  |                                   |  |                                   |                               |                                   |            |   |     |               |                                   |  |                |     |  |
| REGIONAL (PLANNING REGIONS)   | Maritime Spatial Plan  | The sea and the terrestrial part that is functionally interlinked with the sea |       |                  |  |            |  |            |                           |            |                             |                       |  |   |                                  |                           |                                       |                                  |  |                                   |  |                                   |                               |                                   |            |   |     |               |                                   |  |                |     |  |
|   | Sustainable Development Strategy of a Planning Region          | Territory of the Planning Region   |       |                  |  |            |  |            |                           |            |                             |                       |  |   |                                  |                           |                                       |                                  |  |                                   |  |                                   |                               |                                   |            |   |     |               |                                   |  |                |     |  |
| LOCAL (LOCAL GOVERNMENTS)   | Planning Region Development Programme                          | Territory of the Planning Region   |       |                  |  |            |  |            |                           |            |                             |                       |  |   |                                  |                           |                                       |                                  |  |                                   |  |                                   |                               |                                   |            |   |     |               |                                   |  |                |     |  |
|   | Sustainable Development Strategy of a Local Government         | Territory of the local government  |       |                  |  |            |  |            |                           |            |                             |                       |  |   |                                  |                           |                                       |                                  |  |                                   |  |                                   |                               |                                   |            |   |     |               |                                   |  |                |     |  |
|   | Local Government Development Programme                         | Territory of the local government  |       |                  |  |            |  |            |                           |            |                             |                       |  |   |                                  |                           |                                       |                                  |  |                                   |  |                                   |                               |                                   |            |   |     |               |                                   |  |                |     |  |
|   | Local Government Spatial Plan                                  | Territory of the local government  |       |                  |  |            |  |            |                           |            |                             |                       |  |   |                                  |                           |                                       |                                  |  |                                   |  |                                   |                               |                                   |            |   |     |               |                                   |  |                |     |  |
|   | Local Plan   | A part of the territory of the local government                                |       |                  |  |            |  |            |                           |            |                             |                       |  |   |                                  |                           |                                       |                                  |  |                                   |  |                                   |                               |                                   |            |   |     |               |                                   |  |                |     |  |
| ALL   | Detailed Plan  | Typically deals with land unit(s)  |       |                  |  |            |  |            |                           |            |                             |                       |  |   |                                  |                           |                                       |                                  |  |                                   |  |                                   |                               |                                   |            |   |     |               |                                   |  |                |     |  |
|   | Thematic Plans   | Any  |       |                  |  |            |  |            |                           |            |                             |                       |  |   |                                  |                           |                                       |                                  |  |                                   |  |                                   |                               |                                   |            |   |     |               |                                   |  |                |     |  |

## Facts

## Legal basis

- Spatial Development Planning Law (adopted by the *Saeima* on 13 October 2011; entered into force on 1 December 2011). Section 32 briefly describes thematic planning.
- Cabinet Regulations No. 628 (adopted by the Cabinet of Ministers on 14 October 2014; entered into force on 1 May 2015) on local (municipal) spatial development planning documents details the requirements for the contents of a Thematic Plan (Section 3.6) and the basic procedure for its preparation (Section 5.4). Overall, thematic planning is less regulated than other planning formats.

## Competences

- According to Cabinet Regulations No. 628 (Section 5.4), the local government is responsible for preparing the Thematic Plans locally.

## Binding force

- The Thematic Plans are approved by the local government.
- The Thematic Plans must be considered when other spatial planning documents are prepared.

## Tasks and content

- The local government defines the planning tasks and requirements for a Thematic Plan.
- A Thematic Plan should have (1) a graphical part and (2) a descriptive (textual) part.

## Process, duration, participation

- In June 2018, Jelgava City Council made a decision to prepare a Thematic Plan on the use of public waters located within the city's administrative borders, and approved a Development Manager and a work programme.
- The municipality took a research-based approach to preparing the draft plan. They outsourced the data collection and spatial data analysis to the planning consultancy company SIA Grupa93, but also consulted with stakeholders using the waterbodies and the adjacent land.

- In March 2019, Jelgava City Council made a decision to put the draft plan out for public consultation. The public consultation took place in April 2019 (three full weeks). A public discussion meeting took place on 15 April 2019. Based on the results of the public consultation process and the opinions received from the relevant institutions, a decision was made to make minor improvements to the plan and submit it for approval to the Jelgava City Council.
- Jelgava City Council approved the Thematic Plan on 28 November 2019.

#### Duration of validity

- Not specified

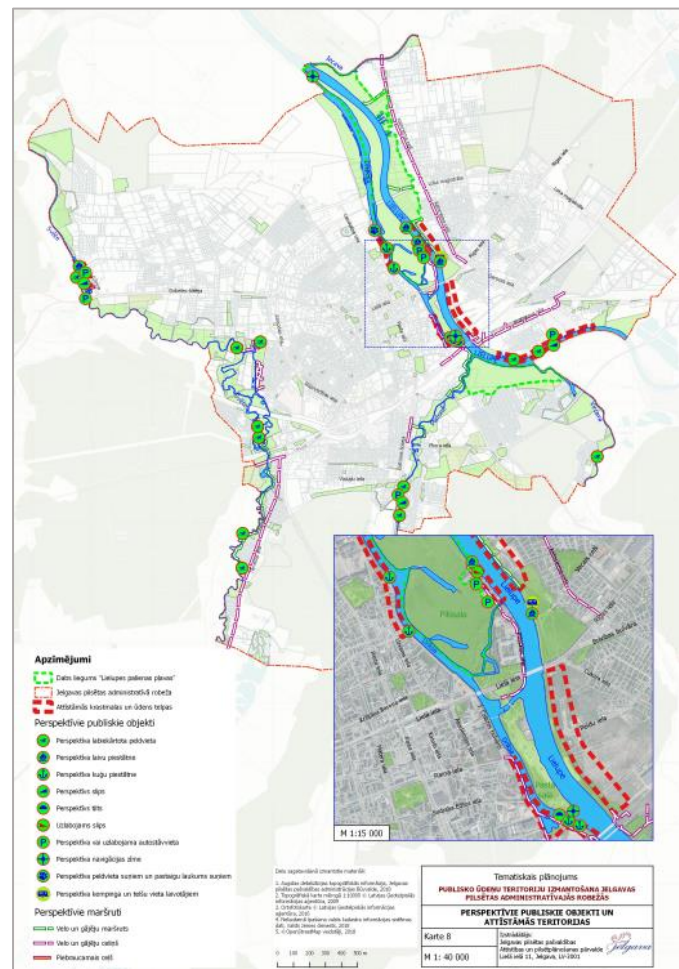
### Details of the plan

The Thematic Plan has two parts: (1) an explanatory note or the descriptive part and (2) a graphical part. The explanatory note describes:

1. The tasks and justification for the preparation of the Thematic Plan
2. The methodology for the preparation of the Thematic Plan
3. An analysis of the regulations and planning documents related to the use of public waters
4. The water and waterfront in the urban environment
5. Public waters in Jelgava city
6. Historical waterbodies in Jelgava city
7. The actual use and accessibility of the public waters and the adjacent land
8. Projects impacting the use of public waters
9. Suggestions for improving the use and planning of the public waters
10. Priority waterfront development projects
11. Suggestions for future development

The graphical part includes nine maps:

1. Freely accessible parts of the waterfront
2. Types of banks
3. Proprietary rights on the waterfront
4. Access to the waterfront in spring
5. Access to the waterfront in summer
6. Use of the waters
7. Restricted access parts of the waterfront
8. Prospective public areas and development areas
9. River protection zones



Prospective public areas and development areas

## Characteristics

### Location of the area

- The Thematic Plan focuses on the rivers and the adjacent land areas located within the administrative borders of Jelgava. These are *Lielupe*, *Svēte*, *Iecava*, *Platone*, and *Virca*. The map below shows their location and relative size in Jelgava city.



### Initial situation

- The public waters account for 272 ha or 4.5% of the territory of Jelgava, and have important scenic and economic potential related to transport, tourism, and recreation.
- Based on the existing planning documents (Sustainable Development Strategy of the City of Jelgava 2007-2020 and Development Programme of the City of Jelgava 2014-2020), several development projects have started or been completed within the land areas adjacent to the public waters. However, these developments lacked a unified strategy, threatening water quality, investment attractiveness, and different stakeholders' needs.
- The preparation of the Thematic Plan was also in line with the Zemgale Planning Region Development Programme 2015-2020 and its medium-term goal to ensure the sustainable management and development of natural resources, including water management and the reduction of pollution.
- A wide range of national, regional, and local planning documents and regulations were considered when preparing the Thematic Plan.

### Particularities of the procedure and/or contents

- The Thematic Plan is considered a part of the preparatory work for the next spatial plan of the city of Jelgava. The solutions and suggestions proposed in the plan will be evaluated when preparing the next spatial plan and included as an integral part of it.
- The preparation of the Thematic Plan was financially supported by the Latvian Environmental Protection Fund.

## Notes and links

Information about the Thematic Plan on the State Unified Geospatial Information Portal (in Latvian):

[https://geolatvija.lv/geo/tapis#document\\_16263](https://geolatvija.lv/geo/tapis#document_16263)

Information about the Thematic Plan on the website of Jelgava City (in Latvian):

<https://www.jelgava.lv/lv/pasvaldiba/dokumenti/jelgavas-pilsetas-attistibas-planosanas-dokumenti/tematiskie-planojumi/>