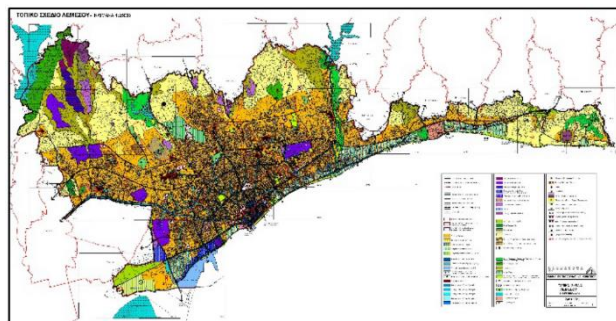


## Fact sheet for planning levels

Planning level		Type of plan				
<b>Local planning</b>						
<b>Land Use Map</b>						
Planning system of the Republic of Cyprus						
Planning level	Planning instrument	Content of plan	Local bodies	Policy maker	Legislation	Legal Design Code
National strategy	Master Plan (Spatial Development)	It includes the general policy or orientation of spatial development, the location of growth poles and the provision of infrastructure, transportation or other spatial services for the whole country or major localities.	Ministry of Planning and Public Works (MPPW)	MPPW	Planning Law (Development of the)	Physical Planning Law (1974)
Intermediate or regional	Policy Statement for the Development of the Region	General, strategic and detailed maps, etc. It includes the location, the scale, the objectives, the functions, the land use, etc. It also includes the location of growth poles and areas of special importance to be developed for the region. It also includes the location of special zones for each county.	Ministry of Planning and Public Works (MPPW)	Minister of the Interior	Regional Planning Regulations (1974)	Regional Planning Law (1974)
Local planning of cities and some urban areas, as well as the regional or local special zones	Local Plans (Local Orders)	Follows the national maps, etc. It includes the location, the scale, the objectives, the functions, the land use, etc. It also includes the location of growth poles and areas of special importance to be developed for the region. It also includes the location of special zones for each county.	Ministry of Planning and Public Works (MPPW)	Minister of the Interior	Regional Planning Regulations (1974)	Regional Planning Law (1974)
Local planning of specific urban or high-rise areas	Area Scheme (Local Chapters)	Detail of areas and specific zones and to provide the control over them.	Ministry of Planning and Public Works (MPPW)	Minister of the Interior	Regional Planning Regulations (1974)	Regional Planning Law (1974)



## Facts: Limassol Local Plan

### Legal basis

The Local Plan was prepared according to the provisions of Part D, Articles 10-12E & 14-18 of the Town and Country Planning Law.

### Competences

According to the Town and Country Planning Law, the Minister of the Interior is the competent authority for the preparation of the Local Plan. However, the Minister of the Interior has entrusted the preparation of the Local Plans to the Planning Board. The Department of Town Planning and Housing provides technical support to the Planning Board.

### Binding force

The Local Plan is binding for all planning applications. Exceptions and departures from its provisions are possible after a respective decision of the Ministerial Council.

### Tasks and content

- The textual part of the Local Plan is organised in 34 chapters. Chapters 1 to 4 offer a general introduction, while Chapters 5 to 34 present the policies for the development of uses, as well as other planning areas, such as the traffic policy, the environmental policy, and the protection of cultural heritage. There are four annexes: an explanation of the terms used; basic provisions regarding the development of land; urban design guidelines and design codes; and planning standards for educational facilities.
- The textual part of the Limassol Local Plan is accompanied by twelve maps, presenting the location and the boundaries of the area in question as well as the proposed planning with regards to the road, pedestrian and bicycle network; park and ride; environmental threats; the protection of the environment; and, of course, the proposed planning zones and land use zones.

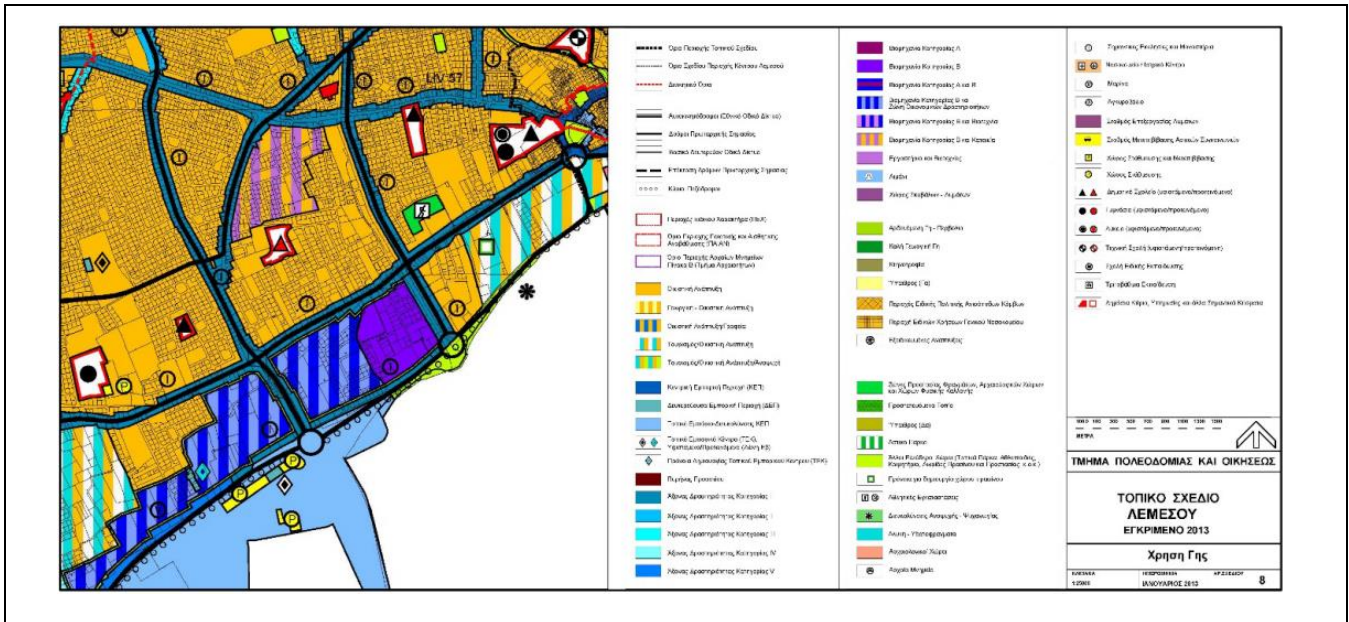
### Process, duration, participation

- The Minister of the Interior published the 2011 Limassol Local Plan in accordance with Article 18.2 of the Town and Country Planning Law on 29 July 2011. This new Local Plan amended the previously effective Local Plan for the same area. It was prepared following the views of the Common Council, which was comprised according to the provisions of Article 12A (now repealed), as well as the views submitted by any individual or body, and the presentations made during the public hearing.
- The 2013 Limassol Local Plan was based on the 2011 version, after modifications were made on the basis of objections submitted during the procedure. The amended 2013 Limassol Local Plan was published by the Minister of the Interior, on behalf of the Council of Ministers (finalisation), in the Government Gazette on 4 January 2013.

### Duration of validity

According to the Town and Country Planning Law, the Minister shall revise any Local Plan within approximately five years after its publication. However, this specific deadline is usually not met in practice, with Local Plans remaining binding until a revised version or amendment enters into force.

## Details of the plan



## Characteristics

### Location of the area

The Limassol Local Plan covers the entire urban agglomeration of the city of Limassol. In terms of administrative units, the Local Plan includes the Municipalities of Limassol, Mesa Geitonia, Agios Athanasios, Kato Polemidia, Ypsonas, and Germasogeia, as well as the Communities of Pano Polemidia and Tserkez Chiflik and parts of the Communities of Agios Tychonas, Pareklisia, Pyrgos, Mouttayaia, Moni and Monagroulli. The total area of the Local Plan is 13,800 ha.

### Initial situation

The predecessor of the 2011-2013 Limassol Local Plan was the 2006 Limassol Local Plan.

### Particularities of the procedure and/or contents

All the Local Plans for Limassol, Larnaca and Pafos were ratified and published in 2013. The Nicosia Local Plan was published a few years later, in 2016. At that time, the Department of Housing and Town Planning emphasised the new planning approach utilised in these plans, characterising them as the 'new generation'. The main enhancements between the 'old' and the 'new' generation relate to approaches based on adapting and responding to new data and methods including individual strategies for each type of development in the interest of modern, flexible legislation, which is harmonised with the principles, directions and procedures promoted in the European Union.

## Notes and links

- [Link to the Land Use Map](#)
- [Link to the set of policies \(textual part\) of the Limassol Local Plan 2011](#) (initial publication)
- [Link to the set of policies \(textual part\) of the Limassol Local Plan 2013](#) (revised and firmed up)

--

PLEASE NOTE that your contribution will be published as an 'Attribution-NonCommercial-ShareAlike 4.0 International (CC BY-NC-SA 4.0)' licence. For further information please see: <https://creativecommons.org/licenses/by-nc-sa/4.0/>