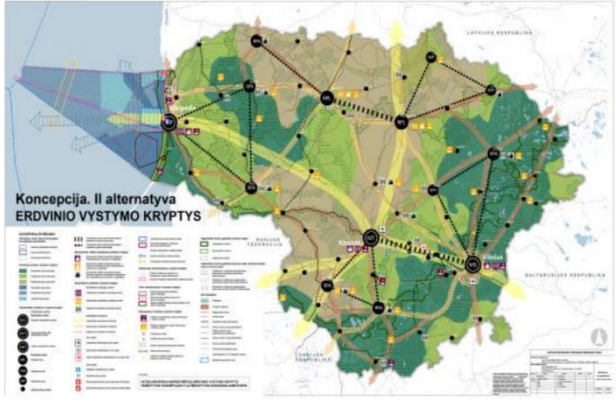


## Fact sheet for planning levels

Planning level	Type of plan					
<b>Country</b>	<p><b>General plan for the Republic of Lithuania 2030</b>  <a href="http://www.bendrasiplanas.lt/">http://www.bendrasiplanas.lt/</a></p>					
<b>Planning system of Lithuania 1 – State level complex plans</b>						
Planning level	Planning instrument	Content of plan	Legal basis	Policy maker	Legal impact	Scale
<b>State level</b>	General plan of the territory of Lithuania (Lietuvos Respublikos teritorijos bendrasis planas)	Territory planning document of the intended economic, social and ecological development, including the European integration, the main issues on functional areas, urban centres and transport networks, renewable energies, the environment etc.	Decision of the Government (Vyriausybės nutarimas)	The institution authorized by the Government (the Ministry of Environment)	Mandatory for the state and municipal institutions	Map scale 1:100.000 - 1:400.000
	General plan of the parts of territory of Lithuania	Territory planning document, detailing the solutions of general plan of Lithuania in the part of the country	Decision of the Government (Vyriausybės nutarimas)	The institution authorized by the Government (the Ministry of Environment)	Mandatory for the state and municipal institutions	Map scale 1:100.000 - 1:400.000
						

--

## Facts: General Plan for the Republic of Lithuania 2030

### Legal basis

Government of the Republic of Lithuania 31 May 2017. Resolution no. 389 'On the preparation of the general plan for the territory of the Republic of Lithuania'

### Competencies

The preparation of general plans for the state territory is organised by the institution authorised by the government (usually the Ministry of the Environment). The plan is then approved by the government.

### Binding force

Legally binding for all state actors at national level (ministries, state agencies, etc.). Each level of lower territorial planning must follow the solutions in the territorial planning document approved by the higher level of territorial planning, and detail them.

### Tasks and content

The territory subject to the plan is the land and sea territories of the Republic of Lithuania, including the territorial sea of the Republic of Lithuania, as well as the territories in which Lithuania implements sovereign exclusive rights – the continental area and the exclusive economic zone (EEZ). Four areas are analysed: resources and their use; the protection of values and ecosystems, which explores the development and condition of protected spatial/territorial structures; urbanisation processes and infrastructure development; and the economic and social development analysis studies the evolution and state of development structures over a 20-year period. The analysis includes an analysis of the implementation of the current master plan, an analysis of the system of strategic planning documents, as well as the development of a system of indicators describing the state of development of the country's territory. The analysis also encompasses a sectoral analysis, which identifies the development and status of each sector, as well as a cross-sectoral analysis describing the interlinkages and interdependence of sectors, which identifies problematic cross-sectoral situations, aspects of legal regulations that can lead to problems, and identifies trends and forecasts for territorial development.

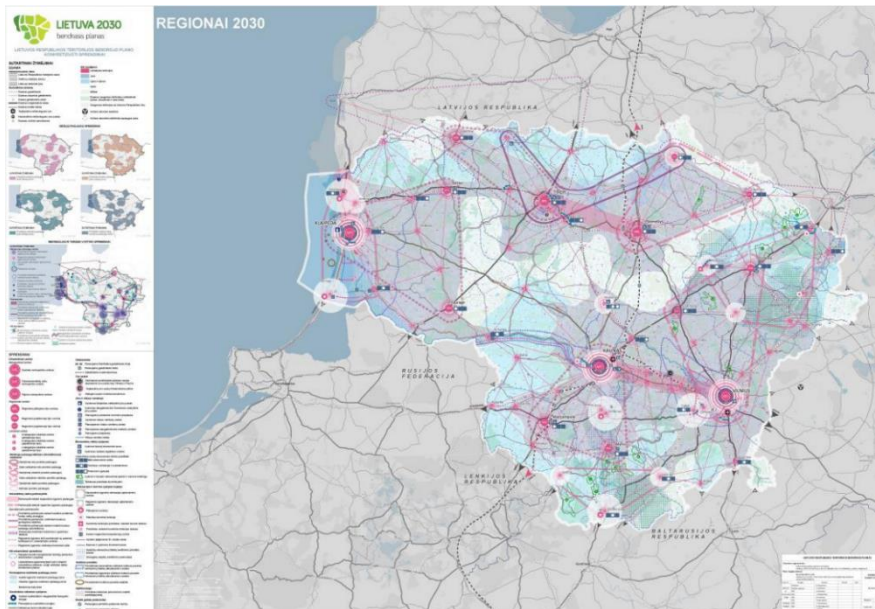
### Process, duration, participation

The General Plan 2030 was subject to broad discussions in political and professional circles and among the general public.

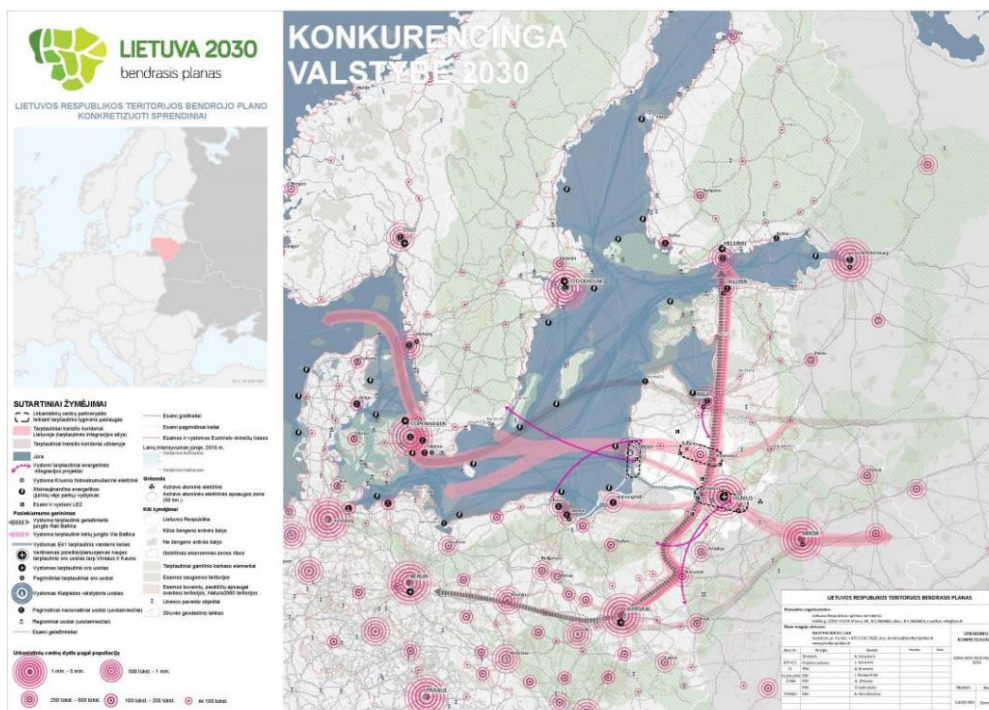
### Duration of validity

Long-term planning horizon: the concept until 2050 and the solutions until 2030.

Details of the plan



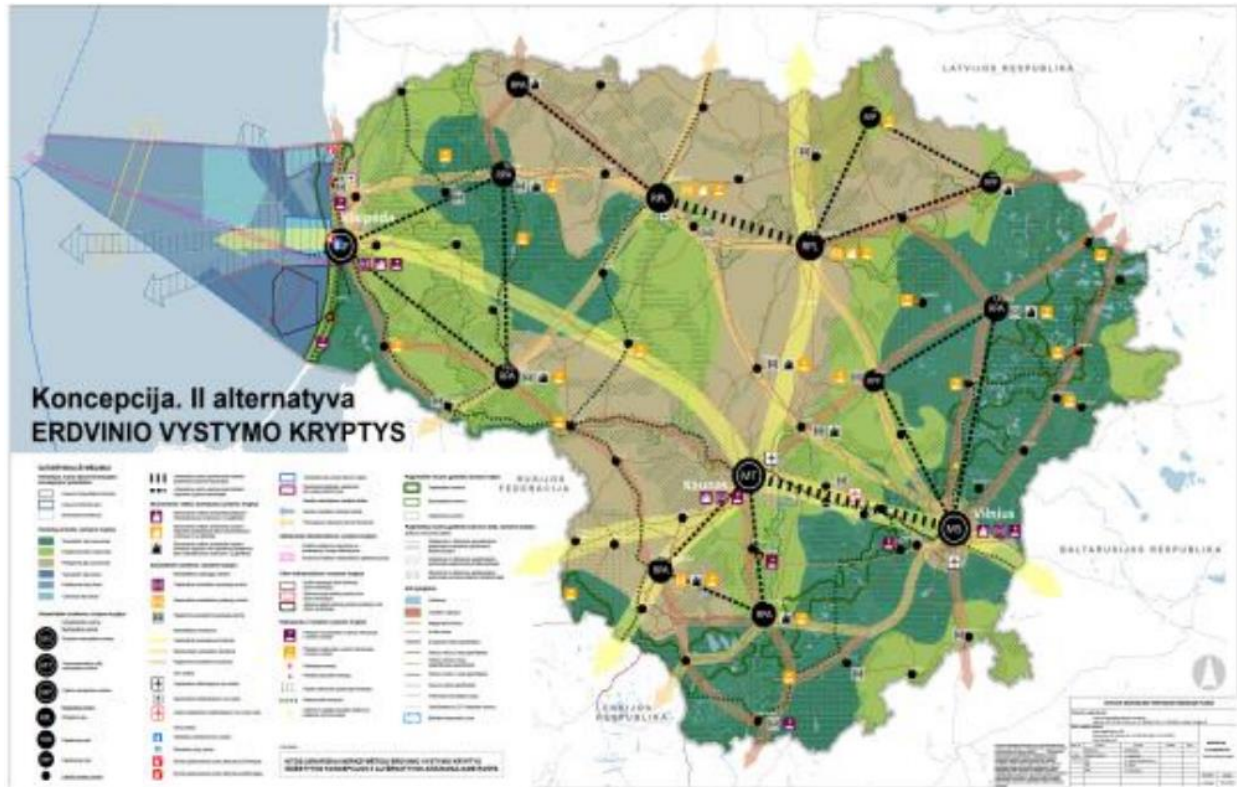
Detail 1: Regions of Lithuania (<http://www.bendrasiplanas.lt/> 2018), General plan for the Republic of Lithuania 2030



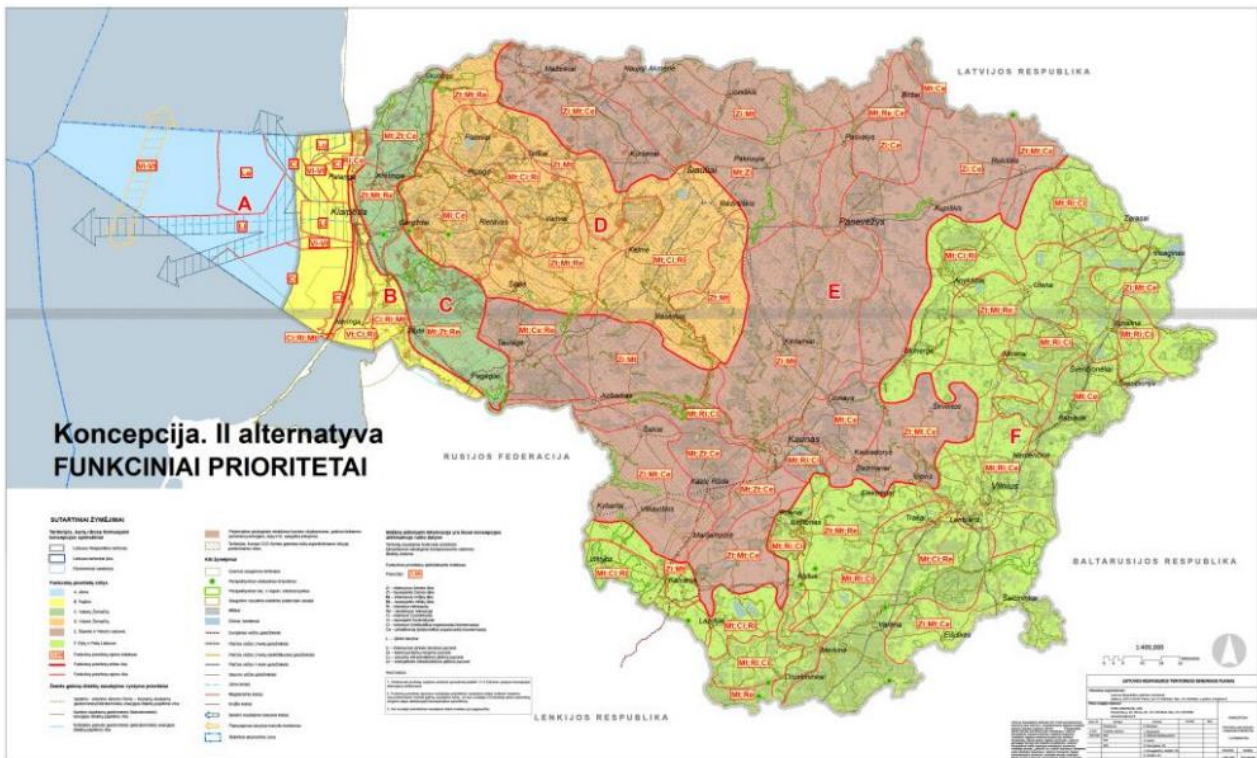
Detail 2: A competitive country ( <http://www.bendrasiplanas.lt/> 2020) General plan for the Republic of Lithuania 2030

--

PLEASE NOTE that your contribution will be published as an 'Attribution-NonCommercial-ShareAlike 4.0 International (CC BY-NC-SA 4.0)' licence.  
For further information please see: <https://creativecommons.org/licenses/by-nc-sa/4.0/>



Detail 3: Spatial development directions (<http://www.bendrasiplanas.lt/> 2020) General plan for the Republic of Lithuania 2030

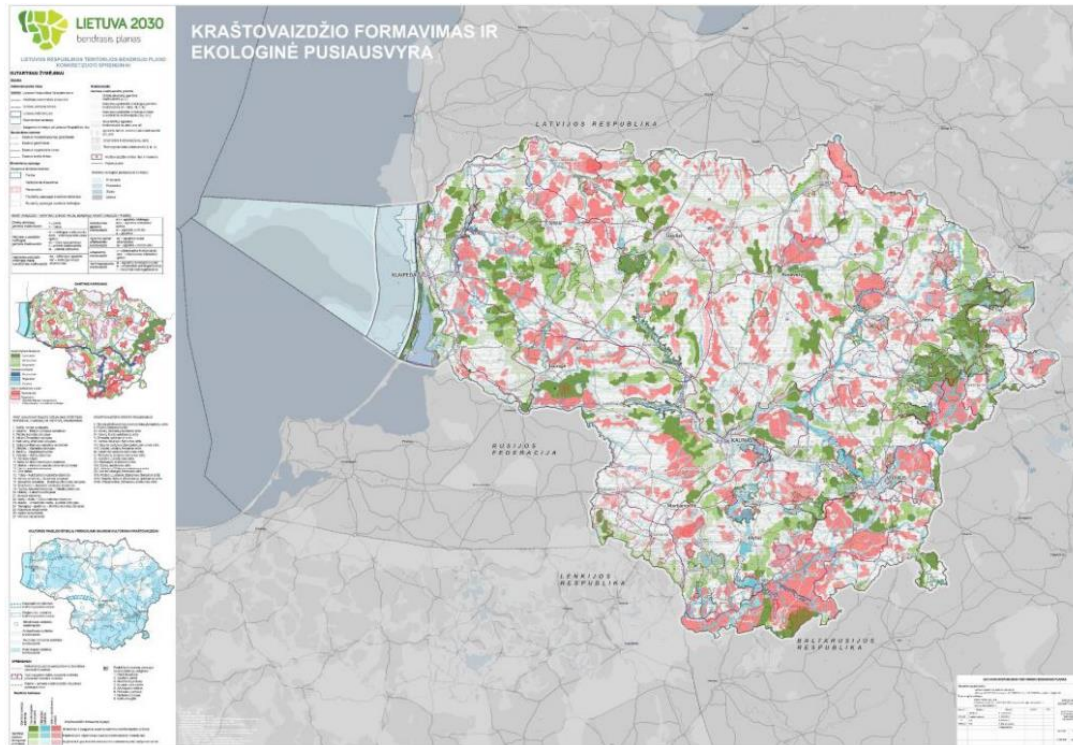


Detail 4: Functional priorities (<http://www.bendrasiplanas.lt/> 2020) General plan for the Republic of Lithuania 2030

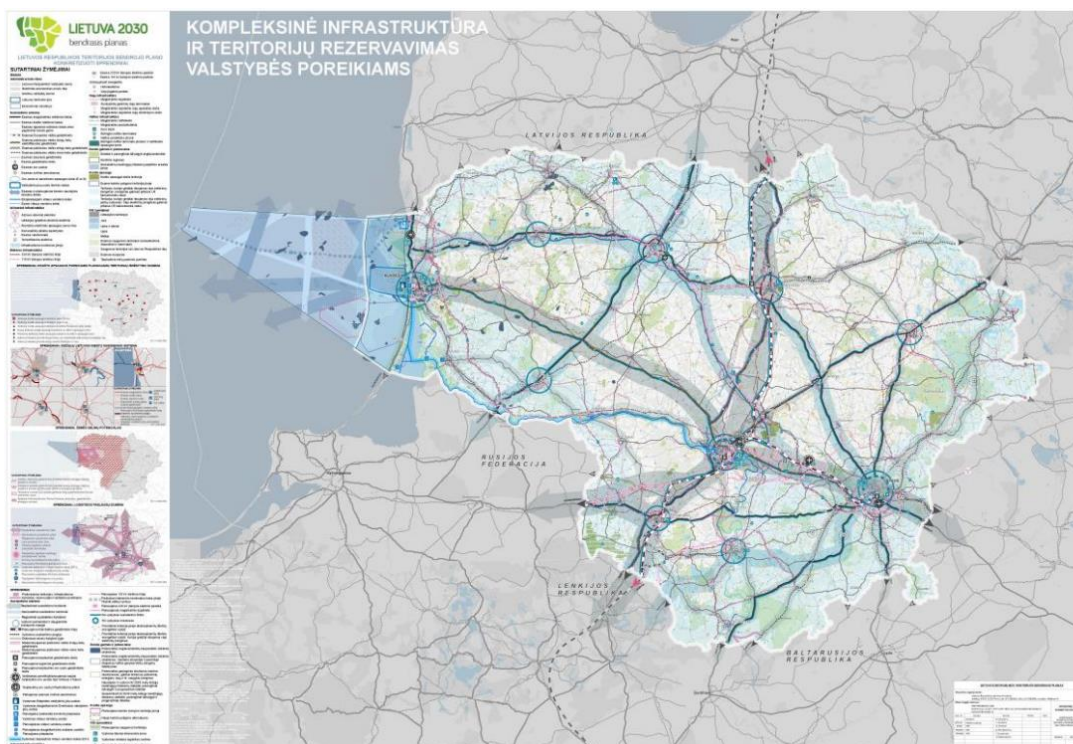
--

PLEASE NOTE that your contribution will be published as an 'Attribution-NonCommercial-ShareAlike 4.0 International (CC BY-NC-SA 4.0)' licence.

For further information please see: <https://creativecommons.org/licenses/by-nc-sa/4.0/>



**Detail 5: Landscape formation and ecological balance** (<http://www.bendrasiplanas.lt/> 2020) General plan for the Republic of Lithuania 2030



**Detail 6: Complex infrastructure and reservation of land for state needs** (<http://www.bendrasiplanas.lt/> 2020) General plan for the Republic of Lithuania 2030

--

## Characteristics

### Location of the area

The concept covers the entire country. Source of overview map:

### Initial situation

The concept replaces an earlier version of the general plan from 2002.

### Particularities of the procedure and/or contents

The concept and solutions in the General Plan for the Lithuanian Territory 2030 seeks to link economic growth with the other aspects of sustainable development.

## Notes and links

Ministry of the Environment of the Republic of Lithuania. Available at:

<https://am.lrv.lt/lt/naujienos/lr-teritorijos-bendrojo-plano-koncepcija-seimui-tvirtinti> (Accessed 8 May 2021)