

## Fact sheet for planning levels

# Planning level

# Type of plan

## County

## County Development Plan

Planning system of Hungary (1 - national)

Planning level	Planning instrument	Content of plan	Legal basis	Policy maker	Legal impact	Scale
<b>National level</b>	Countrywide Concept on Development and Spatial Development (in short form: Countrywide Spatial Development Concept (Országos Fejlesztési és Területrendezési Koncept))	Strategic document of the intended economic and spatial development, including the European integration, the main issues on functional areas, urban centres and transport networks, renewable energies, the environment etc.	Parliament Decision No. 1/2014 of 3rd January on National Development and Spatial Development Concept (1/2014. (I. 3.) Önkormányzatok és Helyi Önkormányzatok Fejlesztési és Területrendezési Konceptjéről) with subsequent amendments	Parliament Decision, prepared by the Government, especially by the National Economic Planning Office (Nemzetgazdasági Tervezési Hivatal)	Legally not binding for all actors (Parliament Decision, but no formal law), but binding for all state actors at national level (Ministries, state agencies etc.)	Nationwide, no scale of maps (sketches approx. 1:5 millions)
<b>National and - in specific cases - regional level</b>	Countrywide Spatial Development Plan of Hungary and some of its emphasized areas (Magyarország és egyes kiemelt területeinek területrendezési terve)	Legal basis of intended sustainable spatial development (economy, social cohesion and the environment), including maps (especially the Structure Plan of the country and the Nationwide Land Use Zoning Plan) and textual requirements	Act No. 139 of 2018 on the Spatial Plan of Hungary and some of its emphasized areas (2018. évi CXCV. törvény Magyarország és egyes kiemelt területeinek területrendezési tervéről) with subsequent amendments	Law of the Parliament, prepared by the Government, including different government agencies	Binding for all actors	Nationwide and relevant for the Agglomeration of Budapest and the Lake Balaton Region, scale of maps in the published digital version from approx. 1:2.5 millions to 1:500 000

**Facts: Development Plan for Vas County (Hungary)****Legal basis**

*(Please note: according to the Hungarian legal tradition, quotations usually refer to the original provision; the subsequent amendments are incorporated into the online version on [net.jogtar.hu](http://net.jogtar.hu).)*

- Law No. 21 of 1996 on Spatial Development and Planning (1996. évi XXI. törvény a területfejlesztésről és a területrendezésről).
- Law No. 139 of 2018 on the Countrywide Spatial Development Plan of Hungary and of several emphasised spaces (2018. évi CXXXIX. törvény Magyarország és egyes kiemelt térségeinek területrendezési tervéről).

**Competencies**

The County Chief Architect's Office is responsible for preparing the plan pursuant to the abovementioned legislation; the plan is adopted by the county council by resolution (no formal statute).

**Binding force**

The plan is legally binding for all actors

**Tasks and content**

Vas County has approximately 260,000 inhabitants across an area of around 3,336 km<sup>2</sup>. The legend of the cartographic element (which constitutes part of the plan alongside the text) of the legally binding Structural Plan is as follows:

- Green: forests
- Yellow: agricultural areas
- Dark grey: urbanised areas
- Light grey: rural settlements
- Ochre: mixed use areas
- Vertical blue hatched area: potential flooding areas
- Double red lines: main roads
- Single red lines: other roads
- Red dotted lines: nationwide network of cycle paths
- Green dotted lines: regional network of cycle paths
- Black and white lines: railways

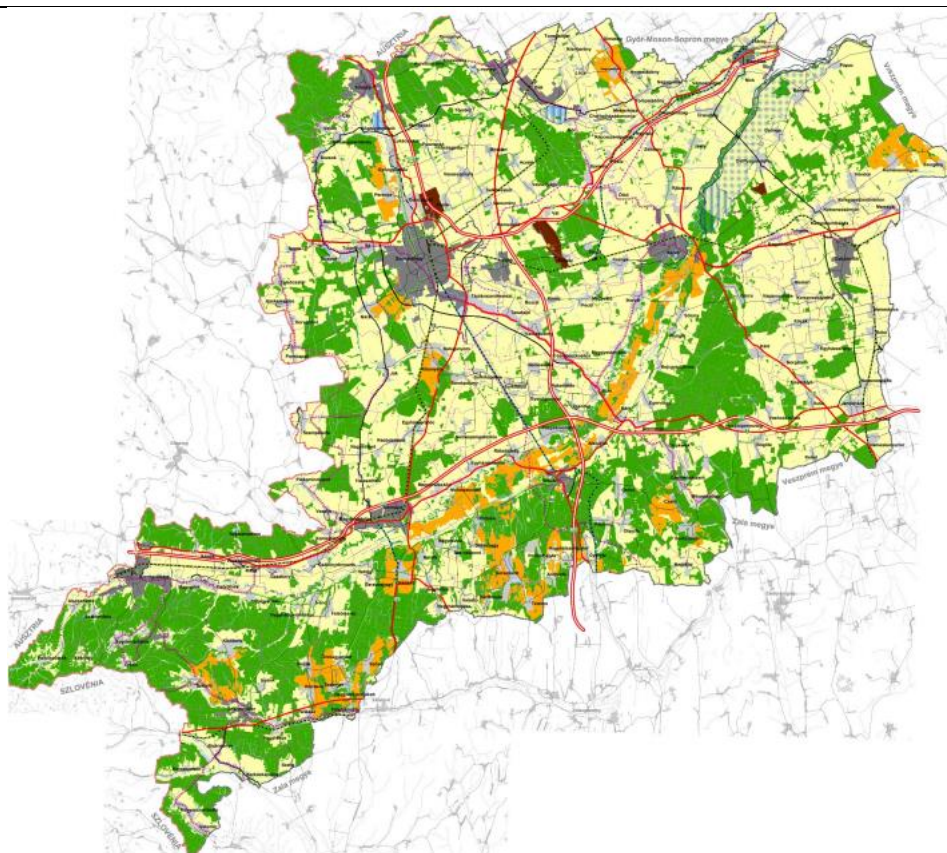
**Process, duration, participation**

After a broad public discussion, the concept was adopted in 2010.

**Duration of validity**

Long-term planning horizon.

## Details of the plan



**Detail 1: CDP – legally binding structure plan**

## Characteristics

### Location of the area

The planning area covers the entire county, which is close to the western border of the country..

### Initial situation

The concept replaces a former version of 2006.

### Particularities of the procedure and/or contents

Not typical insofar as situated close to the border of Austria.

## Notes and links

Vas Megye Területrendezési Terve.

[http://www.vas megye.hu/wp-content/uploads/2018/12/Vas\\_TrT\\_I\\_2010nov\\_rendelet\\_hatarozat.pdf](http://www.vas megye.hu/wp-content/uploads/2018/12/Vas_TrT_I_2010nov_rendelet_hatarozat.pdf)

(Accessed 14th November 2020).