

Fact sheet for planning levels

Planning level

Type of plan

| Planning level | Planning instrument | Content of plan | Legislation | Policy maker | Legislated | Scale |
|---|--|--|--|--|--|--|
| National | Strategic Plan for Economic and Development (SPEAD) 2014-2018 (replaces the previous Strategic Plan) | Strategic spatial direction affecting national economic, social and environmental aspects and issues | Chapter 952 Development Planning Act (DPA) of 2010 | Malta Planning Authority (as approved by Parliament) | Binding for lower tier spatial plans and policies | Nationwide (up to 25 nautical miles from the baseline coast) |
| National | Subject Plans | Elaborate specific provisions on land use, waste management and other policies in order to develop a plan | Chapter 952 DPA sub-article 47 | Malta Planning Authority | Not subject to all relevant aspects of the Strategic Plan but it is supplementary | Nationwide |
| Regional (not conformant with NUTS aggregation) | Local Plans (formerly there are seven in place. To be revised to 2 – one for Malta and one for Gozo) | Deals with specific development planning matters of an area by setting out zoning and building height parameters that are not taken into account by the Strategic Plan | Chapter 952 DPA sub-article 48 | Malta Planning Authority | Binding for all activities falling within the region | Regional |
| Sub-regional (Sub-Local) | Action Plan/Management Plan | Deals with a specific zone in local plans that requires thematically focused action (e.g. Green Action Plan) | Chapter 952 DPA sub-article 49 | Malta Planning Authority | Binds sub-regional/sub-local areas | Sub-regional/sub-local |
| National spatial thematic | Other policies e.g. Planning Guidance | Deals with a specific matter on a national scale e.g. Rural Planning Guidance | Chapter 952 DPA sub-article 50 | Malta Planning Authority | Takes forward strategic policy in greater details based on a specific thematic requirement | National in a thematic context |
| Site specific | Development brief | Deals with a specific site or specific small area | Chapter 952 DPA sub-article 51 | Malta Planning Authority | Sets detailed environmental and development planning parameters for a specific site | Site specific |

Local Plan

Source: Planning Authority (2006): South Malta Local Plan. Available at: <https://www.pa.org.mt/en/local-plandetails/south-malta-local-plan> (Accessed 23 May 2022).

Facts on the National Plan

Legal basis and competence

The Development Planning Act of 1992, repealed by the Environment and Development Planning Act of 2010 and subsequently repealed by the Development Planning Act of 2016 requires the Malta Planning Authority to prepare Local Plans for the whole of the Maltese islands. The South Malta Local Plan (SMLP) is one of seven plans and includes 18 localities covering a total area of about 63.1 km² or approximately 20% of the entire territory of the Maltese islands. The plan area comprises the localities of Fgura, Ghaxaq, Gudja, Kirkop, Luqa, M'Scala, Mqabba, Paola, Qrendi, Safi, Sta. Lucia, Siggiewi, Tarxien, Xghajra, Zabbar, Zebbug, Zejtun and Zurrieq as well as the Marsa and Hal Far Industrial Estates.

Binding force

The current set of local plans were approved by the minister responsible for development planning.

Tasks and content

A Local Plan deals mainly with land-use planning and development issues, and indicates where development can take place, the type of development permitted and the criteria against which development proposals are to be assessed by the Malta Environment and Planning Authority (MEPA). Its main function is to guide development by seeking a sustainable balance between the economic and social needs of the public (e.g requirements for homes, shops, employment, transport, recreation and community facilities) and the need to protect and improve the existing urban and natural environment and to meet future demand in a sustainable manner. This is a complex task as requirements are diverse and very often conflicting and the various individual interests have to be balanced against the needs and interests of the general public.

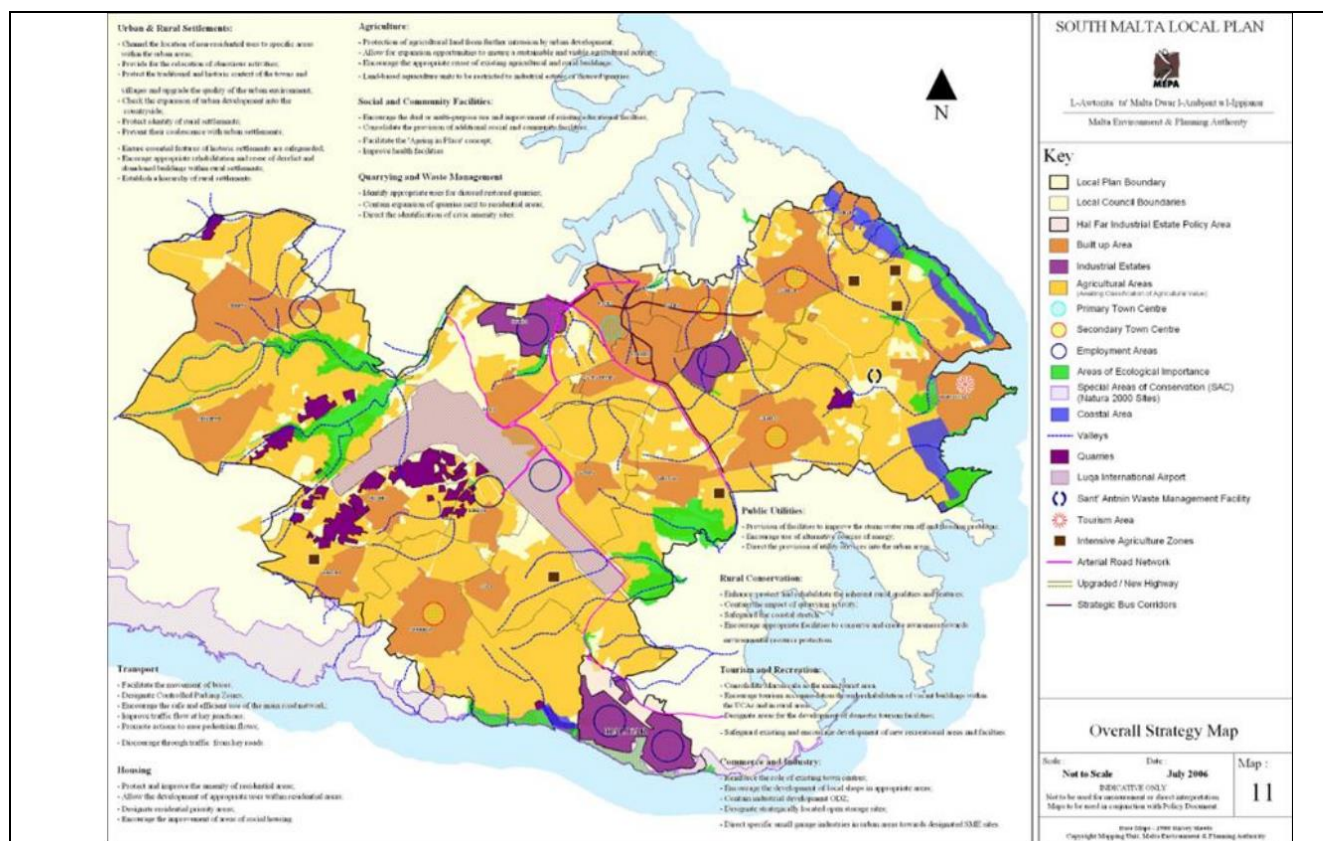
Process, duration, participation

The South Malta Local Plan was approved by the minister responsible for development planning in 2006. Besides information events, workshops and extensive public consultation meetings the plan was coordinated with the government. The plan came into force in 2006.

Duration of validity

The plan was approved in 2006 and is to be reviewed after 10 years.

Details of the plan



Source: Planning Authority (2006): South Malta Local Plan. MEPA. Available at: <https://www.pa.org.mt/en/local-plandetails/south-malta-local-plan> (Accessed 23 May 2022).

Characteristics

The Local Plan provides the framework for development within the plan area for up to 10 years, following its adoption by the government. The primary thrust of the Local Plan is to protect and secure the enhancement of all the assets in the area, to achieve a more sustainable quality of life and efficient use of land for all sectors. The SMLP area borders most of the other Local Plan areas (North West, Grand Harbour, Central and Marsaxlokk Bay) and thus pays due regard to the relevant proposals in these other plans in devising proposals for the plan area. In addition, this plan ensures that its policies and proposals are generally compatible with the relevant plans of the adjoining areas to ensure an overall consistent and comprehensive approach. The Local Plan consists of maps and 'inset' maps supported by written policy statements. The written statement comprises two sections. Section One is the main policy document containing general policies that affect the whole plan area or large parts of it and sets out the guiding planning principles for each issue, e.g. settlements, social and community facilities, tourism, conservation, etc. which are then taken forward in the Area Policies in Section Two. General policies deal with issues not covered by the Structure Plan (or any other policy documents approved by the authority) in sufficient detail for the purpose of the Local Plan. Section Two deals with different parts of the South Malta Local Plan area.

Links

Planning Authority (2006): Planning Authority - Local Plan Details. Available at: <https://www.pa.org.mt/en/local-plandetails/south-malta-local-plan> (Accessed 23 May 2022).