

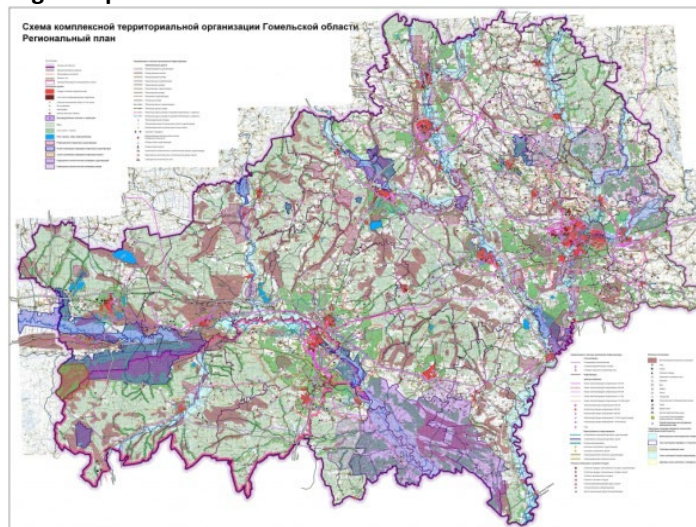
Fact sheet for planning levels

Planning level

Type of plan

| Planning level | Planning instrument | Content of plan | Legal basis | Policy matter | Legal impact | Scale |
|----------------|---------------------|---|--|--|---------------|----------------|
| Regional | Regional plan | Strategic and spatial development of the region, including the location and development of settlements, infrastructure, and land use. | Law on Architectural, Urban Planning and Building Activities in the Republic of Belarus (2004) | Regional development, infrastructure, land use, and settlement patterns. | Regional plan | Regional level |
| Regional | Regional plan | Strategic and spatial development of the region, including the location and development of settlements, infrastructure, and land use. | Law on Architectural, Urban Planning and Building Activities in the Republic of Belarus (2004) | Regional development, infrastructure, land use, and settlement patterns. | Regional plan | Regional level |
| Regional | Regional plan | Strategic and spatial development of the region, including the location and development of settlements, infrastructure, and land use. | Law on Architectural, Urban Planning and Building Activities in the Republic of Belarus (2004) | Regional development, infrastructure, land use, and settlement patterns. | Regional plan | Regional level |
| Regional | Regional plan | Strategic and spatial development of the region, including the location and development of settlements, infrastructure, and land use. | Law on Architectural, Urban Planning and Building Activities in the Republic of Belarus (2004) | Regional development, infrastructure, land use, and settlement patterns. | Regional plan | Regional level |

Regional plan



Gomel Regional Spatial Development Plan

Plan creator: Institute for Regional and Urban Planning of Belarus

Facts: Regional plan

Legal basis

- Resolution of the Council of Ministers to develop the regional plan (N 641, July 2014).
- Law on Architectural, Urban Planning and Building Activities in the Republic of Belarus (2004).
- Technical norms 45-3.01-118-2008 (02250) 'Urban planning. Scheme for the integrated spatial organisation of a region (district/group of districts). Design rules.'

Competences

- According to the law on Architectural, Urban Planning and Building Activities in the Republic of Belarus (2004), the preparation, amendment, and repeal of regional plans is the responsibility of the governmental authorities. The Ministry of Architecture and Construction guides and supervises the work to create the plan, including contracting the specialised planning institution to elaborate it. The Regional Executive Committee (Department on Architecture and Urban Planning) also takes part in the development of a regional plan.

Binding force

- A regional plan serves as a state ordinance with compulsory legal influence for all public entities and planning agencies. Private individuals do not come under its direct legal effect. The regional plan sets the foundation for the development of lower-level spatial plans (administrative district plans and master plans) in addition to offering perspectives for regional sectoral programmes and other projects related to spatial development.

Tasks and content

- The regional plan addresses the general national spatial planning principles laid down in the National Spatial Development Policy and National Spatial Development Plan. Existing strategic national and regional programmes and forecasts determining the priorities and general directions in socio-economic and spatial planning terms were taken into account.
- The regional plan encompasses socio-economic and demographic development trends, regional guidelines, the regional settlement structure, green network, and social and engineering infrastructures. It aims to preserve the natural environment, ensure the rational use and protection of natural resources and complexes, rehabilitate areas affected by Chernobyl disaster, and optimise the environmental conditions of the Gomel region.

--

PLEASE NOTE that your contribution will be published as an 'Attribution-NonCommercial-ShareAlike 4.0 International (CC BY-NC-SA 4.0)' licence.

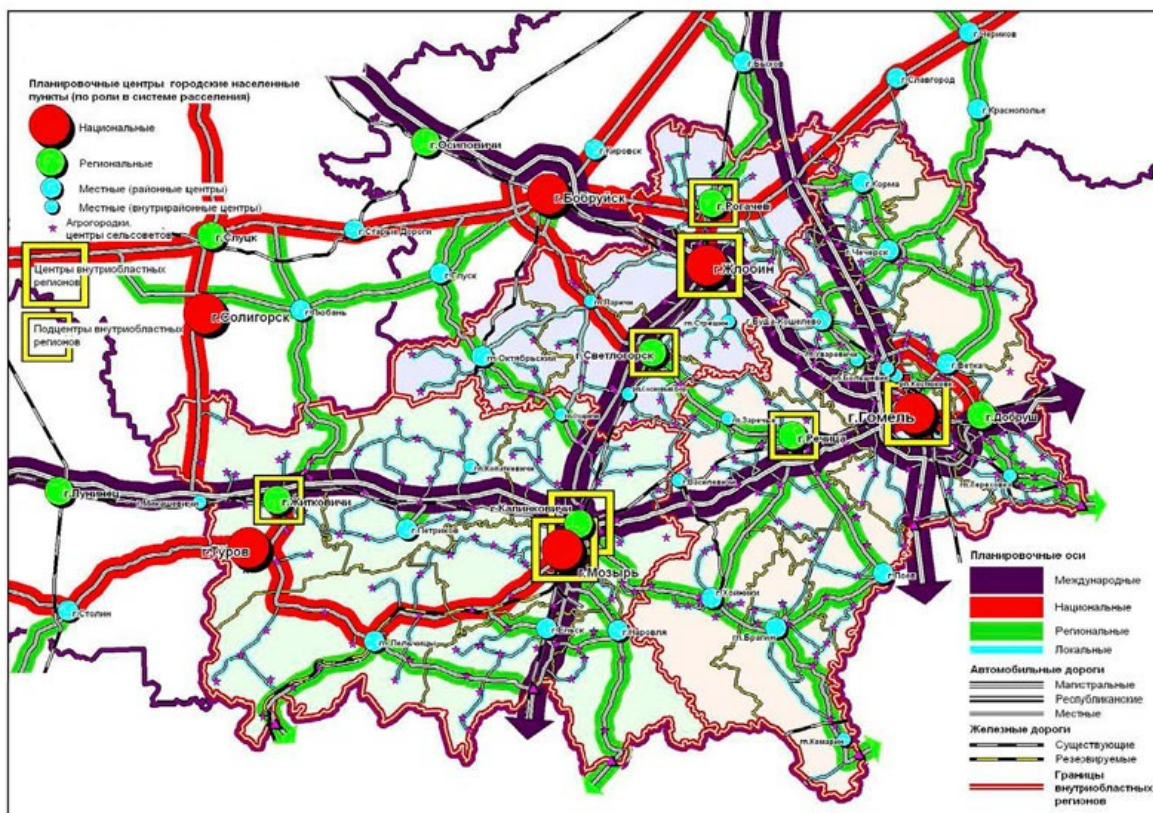
For further information please see: <https://creativecommons.org/licenses/by-nc-sa/4.0/>

Process, duration, participation

- The Regional Executive Committee initiates the development of the regional plan, with the government then making a decision to move forward with creating the plan. The work is financed by the national budget. The Ministry of Architecture and Construction was a contracting authority and supervised the creation of the plan. After coordinating with the relevant ministries and other state bodies and after a review of the plan by the state, the President approves the regional plan by decree (from 2024 it is to be approved by the government).
- The responsibility for the implementation of the plan rests with the Regional Executive Committee.
- The Gomel Regional Plan was the outcome of a two-year planning process from 2014 to 2016.
- The 'Regulations on the procedure for conducting public consultations for architectural, city planning and construction activities' approved by the Council of Ministers (N 687 July 2011) establish the procedure for public hearings. A notice of the public hearings must be published on the regional and local authority's official websites. The maps for the plan were available for public viewing for 20 days in the offices of the Regional Executive Committee, specifically in the Department of Architecture and Urban Planning. Additionally, the materials were accessible on the website of the Regional Executive Committee and other online platforms.

Duration of validity

- The Gomel Regional Plan covers the period up to 2030, and encompasses two stages: the first stage (priority measures) ran until 2020, and the second stage runs until 2030.

Details of the plan**From the Gomel Regional Plan**

Plan creator: Institute for Regional and Urban Planning of Belarus

Characteristics

Location of the area

- The Gomel Region is the largest in the country, spanning over 40,000 km², which comprises 19.4% of the territory of Belarus. It is located in the south of Belarus. The Gomel Region borders the Mogilev Region to the north, the Brest Region to the west, Russia (Bryansk Oblast) to the east and Ukraine (Chernihiv Oblast, and Kyiv Oblast and Zhytomyr Oblast) to the south and southeast.

Initial situation

- The Gomel Region has 21 administrative districts, one city of regional subordination (Gomel), 17 towns of district subordination, 15 townships, and 2,252 rural settlements. In 2014, the total population was about 1.4 million, which is approximately 15% of the republic's population. The level of urbanisation is 75.8% (2014).
- The Gomel Region is one of areas most affected by the Chernobyl disaster in 1986. More than 70% of the region's territory was exposed to radioactive contamination. In 2014, when the work on the plan started, about 45% of the territory was still contaminated. As a result, special regimes and restrictions on living conditions and economic activities in contaminated and populated areas remain in force.
- The Gomel Region is known for its developed industrial base, which provides a foundation for future economic growth and development. It is essential to continue investing in the region's industrial infrastructure to maintain its competitiveness and stay ahead of emerging trends in the global market.

Particularities of the process and/or contents

- The Gomel Regional Plan aims to provide a regulatory and development framework for state planning that takes into consideration both national interests and regional needs. It seeks to harmonise national objectives and regional priorities, considering the unique characteristics and potential of the area. In the regional plan, national interests are addressed by setting up zones of special state regulation as well as specifying and amending adopted planning decisions related to the settlement system, spatial zoning, and infrastructure development at the international and national levels.

Notes and links

<https://www.gomel-region.by/ru/gen-plan-ru/>